

BackTone

Introducing BackTone, the posture training device that corrects your posture the easy way.

Designed to correct the habit of slouching. Worn 2 – 3 times per day for about 20 minutes, the BackTone Posture Corrector 'beeps' whenever you slouch. To turn the 'beep' off, just straighten up. The BackTone Posture Corrector re-sets your body's learnt automatic motor patterns. You can also set BackTone to vibrate for short periods instead of beeping.

BackTone enables you to change your body's habitual posture – easily.

What is BackTone?

BackTone consists of a tone or vibration producing sensor, held against your body between your shoulder blades and your waist. It has adjustable straps, which allow you to adapt the sensitivity to your desired posture. As you begin to slouch, round your shoulders or slump your upper body forward, BackTone emits a tone. The tone continues until you straighten up and correct your posture.

How to Use BackTone

Wear BackTone whilst going about your everyday tasks. Every time you slouch, BackTone will beep and continue to beep until you straighten up. The only way to stop the sound is to straighten up. Your body quickly becomes accustomed to using it's correct posture. You can even use BackTone on vibration mode when you don't want anyone to hear the beep.

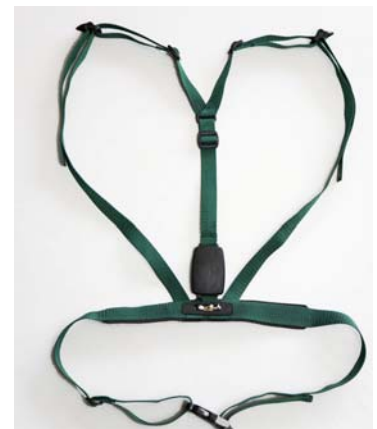
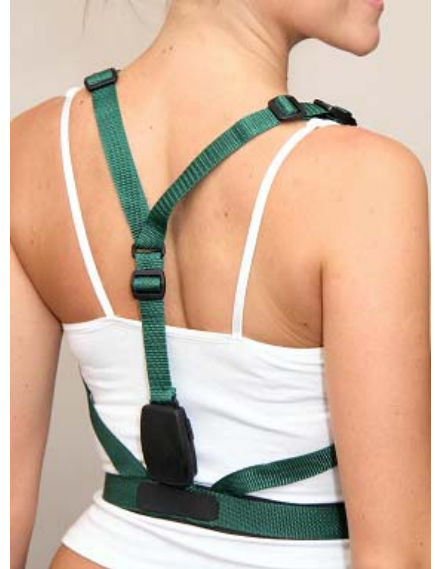
When to Wear BackTone

BackTone is only worn for short periods of about 20 minutes, two or three times a day until good posture becomes a habit.

Availability

- Phone **07 5476 6715** for further information.
- Visit our web site at www.backtone.com
- Phone Sportstek Physical Therapy Supplies on 1300 785 786

Price: BackTone - \$66.00 AUD incl GST (+ plus postage and handling)



BackTone